



**TOMOE**  
**FOOD SERVICES**

# PRODUCT CATALOG

Address : 355 Food Center Drive Unit D18-D21 Bronx, NY 10474  
Tel: (718) 328-1128 Email: [Info@tomoefoodnyc.com](mailto:Info@tomoefoodnyc.com)  
[www.Tomoefoodservices.com](http://www.Tomoefoodservices.com)



**TOMOE**  
FOOD SERVICES

## ABOUT US

Tomoe Food Services, we are a leading wholesale distributor of meat on the East Coast, specializing Japanese and American Wagyu beef, alongside other premium meats and seafood. We cater to the specific needs of high-end chefs, restaurants and retailers seeking exceptional quality ingredients.



## OUR PRODUCTS



**JAPANESE WAGYU**



**AMERICAN WAGYU**



**AMERICAN BEEF**



**PREMIUM PORK**



**OTHER PREMIUM MEATS**



**PREMIUM SEAFOOD**



## IN-HOUSE PROCESSING PLANT FOR PRODUCT CUSTOMIZATION

We can do a specific customization upon request such as sizing, trimming and packing in different package options.

Our processing plant is USDA certified.  
 Our facility is monitored & maintained by experts.  
 Your product will be manufactured by experienced and well-trained staffs.

## PACKAGING OPTIONS



### SKIN PACK

- Great for high-end products
- Suitable for frozen items
- Fits only small portion



### TRAY PACK

- Great for grocery stores
- Suitable for fresh items
- Fits medium portion



### ROLL STOCK PACK

- Great for restaurant and kitchen use
- Suitable for both fresh & frozen items
- Fits bulk portion

## EXAMPLE OF CUTS



### SLICE



### STEAK CUT



### SHABU SHABU CUT



### YAKINIKU CUT



### GROUND



### CUBE CUT

# 日本産和牛

## JAPANESE WAGYU

A5 WAGYU RIBEYE



A5 WAGYU STRIPLOIN



A5 WAGYU TENDERLOIN



A4 WAGYU STRIPLOIN



# JAPANESE WAGYU



## A5 WAGYU RIBEYE

Code : 20000  
Piece : 12 lbs  
Case : 24 lbs



## A5 WAGYU RIBEYE STEAK CUT

Code : 20000STK  
Piece : 1 lb



## A5 WAGYU STRIPLOIN

Code : 20001  
Piece : 15 lbs  
Case : 30 lbs



## A5 WAGYU STRIPLOIN SLICE PACK

Code : 20001SLC  
Piece : 0.5 lbs  
Case : 5 lbs



## A5 WAGYU STRIPLOIN STEAK CUT

Code : 20001STK  
Piece : 1 lb



## A5 WAGYU TENDERLOIN

Code : 20002  
Piece : 10 lbs  
Case : 20 lbs

# JAPANESE WAGYU



## A5 WAGYU SHORT PLATE SET

Code : 20003  
Case : 40 lbs



## A5 WAGYU SHORT RIB SET

Code : 20004  
Case : 40 lbs



## A5 WAGYU KNUCKLE SET

Code : 20005  
Case : 45 lbs



## A5 WAGYU SHOULDER CLOD SET

Code : 20006  
Case : 50 lbs



## A5 WAGYU TOP SIRLOIN BUTT

Code : 20007  
Piece : 12 lb



## A5 WAGYU CULOTTE

Code : 20007C  
Piece : 12 lbs

# JAPANESE WAGYU



## A5 WAGYU CHUCK ROLL

Code : 20008  
Piece : 15 lbs  
Case : 50 lbs



## A5 WAGYU LIFTER MEAT (RIB CAP)

Code : 20009  
Piece : 3 lbs  
Case : 30 lbs



## A5 WAGYU BRISKET

Code : 20015  
Case : 35 lbs



## A5 WAGYU TOP ROUND

Code : 20017  
Case : 50 lbs



## A5 WAGYU BOTTOM ROUND

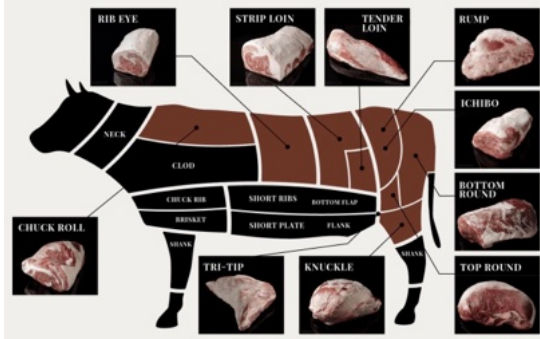
Code : 20017B  
Case : 50 lbs



## A5 WAGYU BONELESS CHUCK SHORT RIB

Code : 21010  
Piece : 8 lbs  
Case : 16 lbs

# JAPANESE WAGYU



## A5 WAGYU FULL SET

Code : 20030



## A4 WAGYU TENDERLOIN

Code : 20013

Piece : 10 lbs

Case : 20 lbs



## A4 WAGYU BONELESS STRIPLOIN

Code : 21001

Piece : 15 lbs

Case : 30 lbs



## A4 WAGYU BONELESS RIBEYE

Code : 21004

Piece : 10 lbs

Case : 20 lbs



## HYBRID WAGYU STRIPLOIN

Code : 27001

Piece : 3 lbs

Case : 25 lbs



## HYBRID WAGYU RIBEYE

Code : 27002

Piece : 10 lbs

Case : 20 lbs



# AMERICAN WAGYU



## IMPERIAL 0X1 STRIPLOIN

Code : 90003  
Grade : Classic  
Piece : 15 lbs  
Case : 30 lbs

Code : 90003SIG  
Grade : Signature  
Piece : 15 lbs  
Case : 30 lbs



## MISHIMA BONELESS RIBEYE

Code : 90005MW  
Grade : 4 Star  
Piece : 15 lbs  
Case : 30 lbs

Code : 90005MW5  
Grade : 5 Star  
Piece : 15 lbs  
Case : 30 lbs



## IMPERIAL 2X2 BONELESS RIBEYE

Code : 90008RESV  
Grade : Reserve  
Piece : 15 lbs  
Case : 30 lbs

Code : 90008SIGN  
Grade : Signature  
Piece : 15 lbs  
Case : 30 lbs



## IMPERIAL BONELESS BRISKET

Code : 90011  
Piece : 15 lb  
Case : 60 lbs



## IMPERIAL RIB FINGER MEAT

Code : 90014  
Piece : 5 lbs  
Case : 30 lbs



## IMPERIAL OUTSIDE SKIRT

Code : 90016  
Piece : 6 lbs  
Case : 30 lbs

# AMERICAN WAGYU



## IMPERIAL CHUCK FLAP

Code : 90017  
Piece : 5 lbs  
Case : 30 lbs



## IMPERIAL BONELESS CHUCK SHORT RIB

Code : 90018  
Piece : 4 lbs  
Case : 20 lbs



## IMPERIAL CHUCK EYE ROLL

Code : 90020  
Piece : 15 lbs  
Case : 60 lbs



## IMPERIAL RIB CAP LIFTER MEAT

Code : 90022  
Piece : 15 lbs  
Case : 60 lbs



## IMPERIAL SHORT RIB

Code : 90027  
Piece : 5 lbs  
Case : 30 lbs



## IMPERIAL BONELESS TOP SIRLOIN (CAP-OFF)

Code : 90028  
Piece : 5 lbs  
Case : 30 lbs

## AMERICAN WAGYU



### MISHIMA BONELESS SHORT RIB

Code : 90031  
Piece : 5 lbs  
Case : 30 lbs



### IMPERIAL INSIDE SKIRT

Code : 90032  
Piece : 5 lbs  
Case : 30 lbs



### IMPERIAL SHORT PLATE

Code : 90036  
Piece : 15 lbs  
Case : 70 lbs



### IMPERIAL SIRLOIN FLAP MEAT

Code : 90041  
Piece : 8 lbs  
Case : 35 lbs



### MISHIMA CHUCK ROLL

Code : 90060MR  
Piece : 18 lbs  
Case : 40 lbs



### IMPERIAL FLAT IRON

Code : 90061  
Piece : 5 lbs  
Case : 30 lbs

# AMERICAN WAGYU



## IMPERIAL PEELED KNUCKLE

Code : 90062  
Piece : 8 lbs  
Case : 40 lbs



## MISHIMA FLANK STEAK

Code : 90063  
Piece : 2 lbs  
Case : 30 lbs



## IMPERIAL FLANK STEAK

Code : 90063IW  
Piece : 5 lbs  
Case : 30 lbs



## IMPERIAL CULOTTE (ICHIBO)

Code : 90065  
Piece : 3 lb  
Case : 30 lbs



## MISHIMA LIFTER MEAT

Code : 90092  
Piece : 15 lb  
Case : 60 lbs



## MISHIMA CHUCK FLAP TAIL

Code : 90093  
Piece : 5 lb  
Case : 30 lbs

## AMERICAN WAGYU



### MISHIMA CULOTTE (ICHIBO)

Code : 90095  
Piece : 3 lbs  
Case : 30 lbs



### MISHIMA OUTSIDE SKIRT

Code : 90096  
Piece : 5 lb  
Case : 30 lbs



### MISHIMA SWISS CUT TONGUE

Code : 90104  
Case : 12 lbs



### MISHIMA FLAT IRON

Code : 90110  
Piece : 5 lbs  
Case : 25 lbs



### MISHIMA PEELED KNUCKLE

Code : 90111  
Piece : 8 lbs  
Case : 40 lbs



### AMERICAN WAGYU GROUND BEEF

Code : 10023  
Case : 10 lbs

## US. BEEF



### US BEEF BONELESS RIBEYE

Code : 40000  
Grade : Prime  
Piece : 15 lbs  
Case : 60 lbs

Code : 40001  
Grade : Choice  
Piece : 15 lbs  
Case : 60 lbs

Code : 40001SL  
Grade : Select  
Piece : 15 lbs  
Case : 60 lbs



### US BEEF 0X1 BONELESS STRIPLOIN

Code : 40002  
Grade : Prime  
Piece : 15 lbs  
Case : 60 lbs

Code : 40003  
Grade : Choice  
Piece : 15 lbs  
Case : 60 lbs



### US BEEF TENDERLOIN

Code : 40005CH  
Grade : Choice  
Piece : 6 lbs  
Case : 80 lbs



### US BEEF BONELESS CHUCK EYE ROLL

Code : 40006PR  
Grade : Prime  
Piece : 15 lbs  
Case : 70 lbs

Code : 40008  
Grade : Choice  
Piece : 15 lbs  
Case : 70 lbs



### US BEEF BONELESS SHORT RIB

Code : 40009  
Grade : Prime  
Piece : 5 lbs  
Case : 40 lbs



### US BEEF ANGUS 9" NAVEL SHORT PLATE

Code : 40010  
Piece : 15 lbs  
Case : 70 lbs

## US. BEEF



### US BEEF ANGUS 9" NAVEL SHORT PLATE SLICE

Code : 40010SL  
Piece : 2.5 lbs  
Case : 25 lbs



### US BEEF FLAT IRON

Code : 40012  
Grade : Prime  
Piece : 5 lbs  
Case : 60 lbs

Code : 40013  
Grade : Choice  
Piece : 5 lbs  
Case : 60 lbs



### US BEEF CHUCK TAIL FLAP

Code : 40017  
Grade : Prime  
Piece : 5 lbs  
Case : 60 lbs



### US BEEF BRISKET

Code : 40018PR  
Grade : Prime  
Piece : 15 lbs  
Case : 70 lbs

Code : 40018  
Grade : Choice  
Piece : 15 lbs  
Case : 70 lbs



### US BEEF OUTSIDE SKIRT SKIN-ON

Code : 40019  
Grade : Prime  
Piece : 6 lbs  
Case : 40 lbs



### US BEEF FLANK STEAK

Code : 40023  
Piece : 8 lbs  
Case : 60 lbs

## US. BEEF



**BEEF TONGUE CROWN CUT**

Code : 40025FR  
Case : 12 lbs



**US BEEF LARGE INTESTINE SPLIT**

Code : 40032  
Case : 11 lbs



**US BEEF LARGE INTESTINE TUBE**

Code : 40032TB  
Case : 15 lbs



**US BEEF ABOMASUM**

Code : 40033  
Case : 30 lbs



**US BEEF LIVER**

Code : 40034  
Case : 10 lbs



**US BEEF HEART**

Code : 40036  
Case : 12 lbs



# US. BEEF



**US BEEF 3PC MIXED BONES**

Code : 40037  
Case : 60 lbs



**US BEEF C/C FEMUR BONES 60#**

Code : 40038EX  
Case : 60 lbs



**US BEEF OXTAIL**

Code : 40040  
Case : 15 lbs



**US GROUND BEEF**

Code : 40045  
Piece : 5 lbs



**US BEEF BONE-IN SHORT RIB**

Code : 40046PR	<u>Whole</u>	<u>1/3 inch cut</u>
Grade : Prime	Piece : 12 lbs	Piece : 12 lbs
Code : 40046	Case : 60 lbs	Case : 60 lbs
Grade : Choice		



**US BEEF BONE-IN CHUCK SHORT RIB**

Code : 40058  
Grade : Choice  
Case : 60 lbs

## US. BEEF



### US BEEF TENDON

Code : 40060  
Case : 11 lbs



### US BEEF HANGING TENDER

Code : 40066  
Grade : Choice  
Piece : 5 lbs  
Case : 50 lbs



### US BEEF HONEYCOMB TRIPE 10#

Code : 40067  
Case : 10 lbs



### US BEEF FEET

Code : 40074  
Case : 20 lbs



### US BEEF MOUNTAIN CHAIN TRIPLE SKINLESS (MINO)

Code : 40080  
Case : 25 lbs

# CHICKEN



## WHOLE CHICKEN

Code : 50000  
Case : 40 lbs



## BONELESS CHICKEN THIGH

Code : 50001  
Piece : 10 lbs  
Case : 40 lbs



## BONELESS CHICKEN THIGH CUBE CUT

Code : 50002  
Case : 40 lbs



## CHICKEN JUMBO WINGS

Code : 50003  
Case : 40 lbs



## CHICKEN BONELESS BREAST

Code : 50004  
Piece : 10 lbs  
Case : 40 lbs



## CHICKEN BONELESS LEG MEAT SKIN-ON

Code : 50005  
Case : 40 lbs

# CHICKEN



## CHICKEN JUMBO WHOLE LEGS

Code : 50006  
Case : 40 lbs



## CHICKEN BACKS (TORIGARA)

Code : 50007  
Case : 40 lbs



## CHICKEN JUMBO PARTY WINGS

Code : 50012  
Piece : 10 lbs  
Case : 40 lbs



## CHICKEN QUARTER LEGS

Code : 50016  
Case : 40 lbs



## CHICKEN TENDER

Code : 50017  
Case : 40 lbs



## CHICKEN DRUMSTICKS

Code : 50021  
Case : 40 lbs

# CHICKEN



## CHICKEN LIVER

Code : 50022  
Piece : 5 lbs  
Case : 300 lbs



## CHICKEN HEARTS

Code : 50023  
Piece : 10 lbs  
Case : 40 lbs



## CHICKEN GIZZARD

Code : 50024  
Piece : 10 lbs  
Case : 40 lbs



## CHICKEN PAWS (MOMIJI)

Code : 50033  
Case : 40 lbs



## CHICKEN KARAAGE 20#

Code : 52001  
Case : 20 lbs



## CHICKEN GYOZA

Code : 52002  
Case : 9 lbs

# PORK



## GROUND PORK

Code : 60005  
Piece : 5 lbs



## DENMARK PORK BELLY

Code : 60006EU  
Piece : 10 lbs  
Case : 40 lbs



## BACON 16/20 SLICE 18#

Code : 60020  
Case : 18 lbs



## PORK ST. LOUIS STYLE SPARE RIBS

Code : 60025  
Case : 30 lbs



## KUROBUTA BONELESS SINGLE BELLY

Code : 60026  
Piece : 10 lb  
Case : 40 lbs



## KUROBUTA TOPLOIN

Code : 60028  
Case : 15 lbs

## PORK



### **KUROBUTA JOWL STEAK**

Code : 60030  
Case : 12 lbs



### **KUROBUTA KATAROSU**

Code : 60034  
Case : 20 lbs



### **KUROBUTA BACK BONE**

Code : 60035  
Case : 30 lbs



### **PORK FEMUR BONES SPLIT**

Code : 60037  
Case : 40 lbs



### **KUROBUTA 8 BONE RACK**

Code : 60039(8)  
Case : 20 lbs



### **KUROBUTA SHOULDER SPARE RIB**

Code : 60042  
Case : 13 lbs

# PORK



## PORK JOWL

Code : 60048  
Case : 10 lbs



## PORK FEET FROZEN

Code : 60059  
Case : 30 lbs



## PORK SPARE RIBS

Code : 60060  
Case : 30 lbs



## KUROBUTA BACK FAT

Code : 60064  
Case : 40 lbs



## CHORIZO

Code : 60067  
Case : 5 lbs



## PORK HOCK FROZEN

Code : 60072  
Case : 20 lbs



# PORK



## PORK HEAD SKINLESS

Code : 60076 or 60079  
Case : 40 lbs



## SWEET ITALIAN SAUSAGE

Code : 60088  
Case : 5 lbs



## ARABIKI SAUSAGE

Code : 61003  
Case : 9 lbs



## PORK BELLY CHASHU

Code : 62001TF  
Case : 22.05 lbs



## TOUMOROKOSHI PORK SHEET BELLY

Code : 63001  
Piece : 10 lbs  
Case : 40 lbs



## TOUMOROKOSHI PORK SHEET BELLY SLICE

Code : 63001SL  
Case : 20 lbs

## PORK



### TOUMOROKOSHI PORK CC LOIN

Code : 63002  
Piece : 10 lbs  
Case : 40 lbs



### TOUMOROKOSHI CT-BUTTS (KATAROSU)

Code : 63003  
Case : 20 lbs



### TOUMOROKOSHI TENDERLOIN

Code : 63004  
Case : 13 lbs



### TOUMOROKOSHI PORK SHOULDER BUTTS

Code : 63005  
Case : 20 lbs



### OMUGI BONELESS SKINLESS BELLY

Code : 30000  
Piece : 10 lbs  
Case : 40 lbs



### OMUGI BONELESS LOIN

Code : 30001  
Piece : 10 lbs  
Case : 40 lbs

## PORK



### OMUGI KATAROSU

Code : 30002  
Case : 20 lbs



### OMUGI BONELESS SHOULDER

Code : 30004  
Case : 40 lbs



### OMUGI BONELESS SHOULDER RIBLET 4PC

Code : 30011  
Case : 10 lbs

# LAMB



## BONELESS LAMB LEG

Code : 70000  
Case : 50 lbs



## LAMB FRENCH RACKS 14-26

Code : 70001  
Piece : 2 lbs  
Case : 20 lbs



## AUSTRALIAN OR NZ 30OZ UP FRENCH STYLE LAMB RACK

Code : 70006  
Case : 25 lbs



## GROUND LAMB

Code : 70008  
Case : 10 lbs



## AUSTRALIAN BONELESS LAMB LEGS

Code : 70016  
Case : 40 lbs

# SEAFOOD



## PREMIUM HAMACHI FILLET 2.5UP

Code : 72001  
 Piece : 2.5 lbs  
 Case : 25 lbs



## GROUND TUNA

Code : 72002  
 Case : 22 lbs



## CUBE TUNA

Code : 72004  
 Case : 22 lbs



## EEL 12OZ (UNAGI)

Code : 72007  
 Case : 22 lbs



## OCEAN SALAD (NO MSG)

Code : 72020  
 Piece : 4.4 lbs  
 Bundle : 17.6 lbs



## SALMON ROE (IKURA)

Code : 72026  
 Piece : 2.2 lbs  
 Case : 22 lbs

# SEAFOOD



## KALUGA FUSION AMBER CAVIAR

Code : 95014

1 oz / 28 g, jar  
1.75 oz / 50 g, jar  
3.5 oz / 100 g, jar

5.5 oz / 150 g, jar  
8 oz / 200 g, jar  
35 oz / 1000 g, jar



## AMERICAN WHITE STURGEON CAVIAR

Code : 95017

1 oz / 28 g, jar  
1.75 oz / 50 g, jar  
3.5 oz / 100 g, jar

5.5 oz / 150 g, jar  
8 oz / 200 g, jar  
35 oz / 1000 g, jar



## SPECIAL RESERVE OSSETRA CAVIAR

Code : 74001

1 oz / 28 g, jar  
1.75 oz / 50 g, jar  
3.5 oz / 100 g, jar

5.5 oz / 150 g, jar  
8 oz / 200 g, jar  
35 oz / 1000 g, jar



## SIBERIAN STURGEON (BAERI)

Code : 95016

1 oz / 28 g, jar  
1.75 oz / 50 g, jar  
3.5 oz / 100 g, jar

5.5 oz / 150 g, jar  
8 oz / 200 g, jar  
35 oz / 1000 g, jar



## FRESH TRUFFLE

Code : 97003



## FOIE GRAS LARGE

Code : 97002  
Piece : 1.6-2 lbs appx.

## FOIE GRAS MEDIUM

Code : 97002B  
Piece : 1.4 lbs appx.

## SEAFOOD



### KING CRAB

Code : 95019K  
Case : 10lbs (5pcs)



### SNOW CRAB

Code : 95020  
Piece : 2.5 lbs  
Case : 30 lbs

## DUCK



### CRESCENT WHOLE DUCK

Code : 80000  
Case : 40 lbs



### CRESCENT BONELESS DUCK BREAST

Code : 80001  
Piece : 1.5 lbs  
Case : 25 lbs



### DUCK BREAST 1/2 MAGRET

Code : 80004  
Case : 6 lbs

**..MEMO..**

Address : 355 Food Center Drive Unit D18-D21 Bronx, NY 10474  
Tel: (718) 328-1128 Email: [Info@tomoefoodnyc.com](mailto:Info@tomoefoodnyc.com)  
[www.Tomoefoodservices.com](http://www.Tomoefoodservices.com)